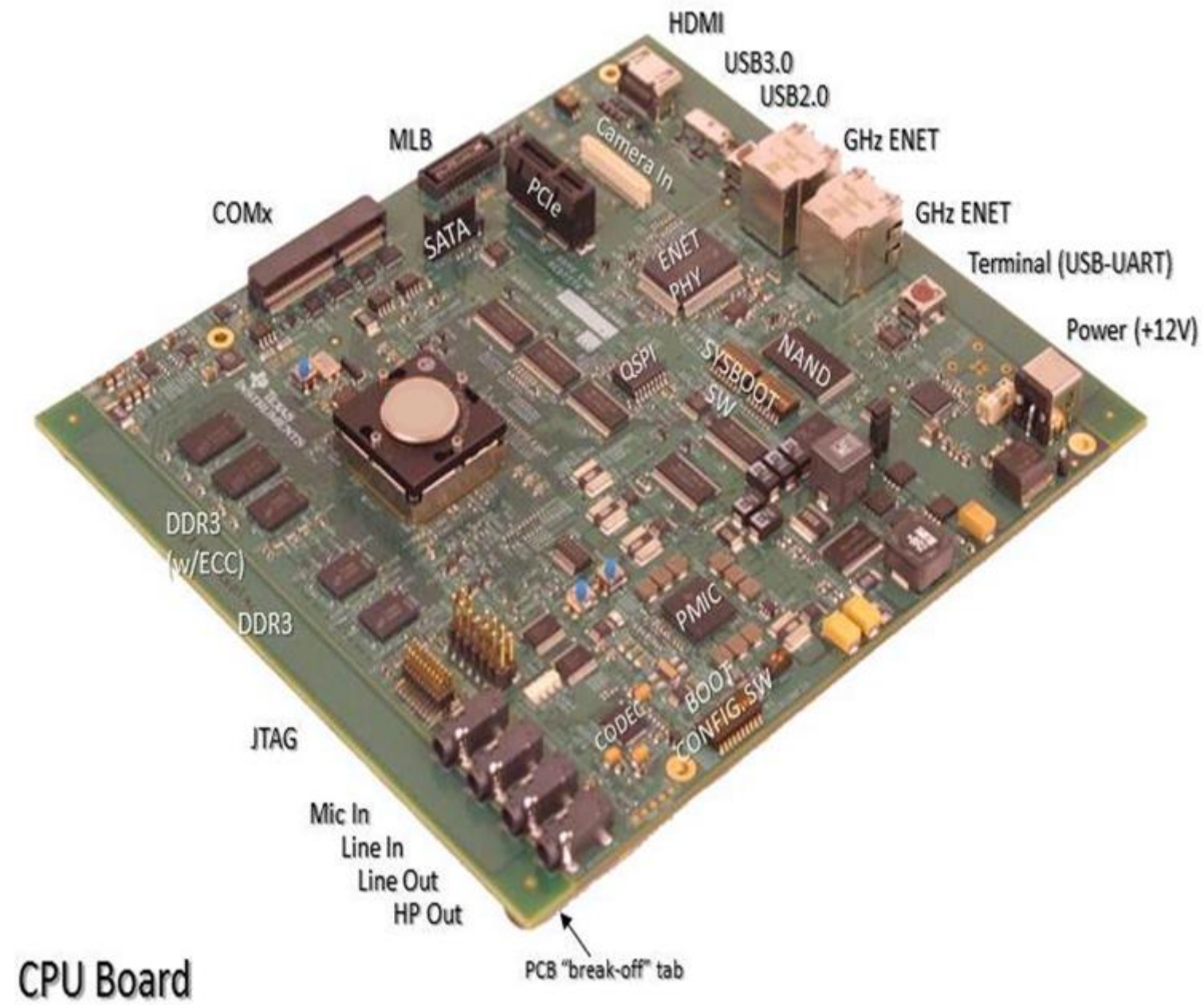
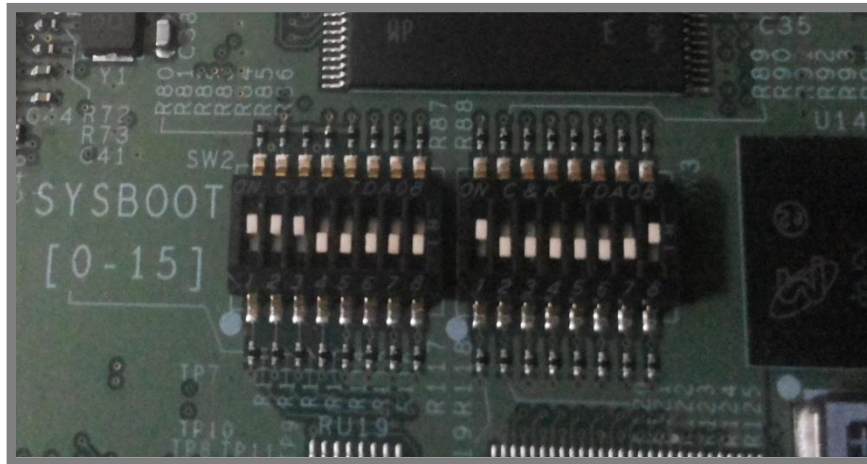


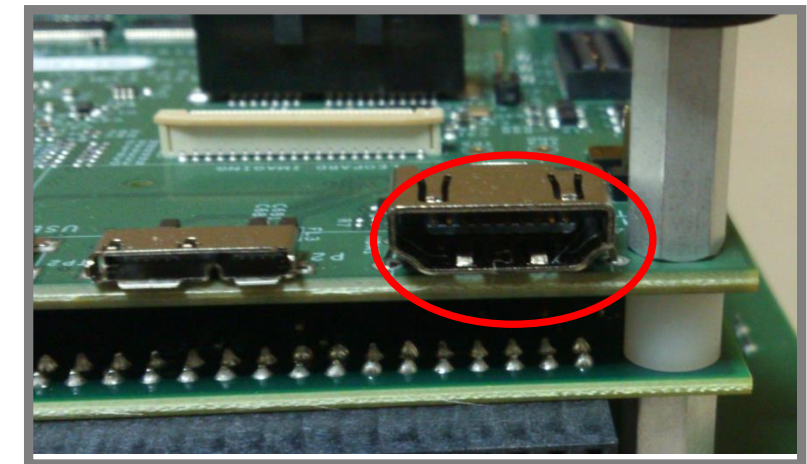
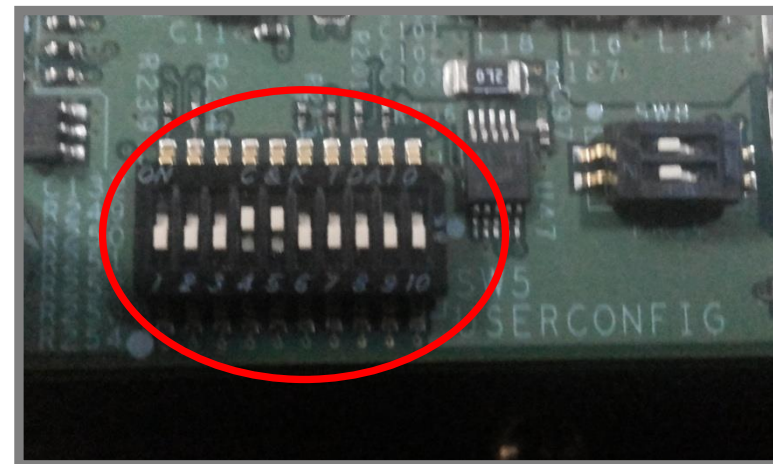
Welcome to the DRA7XX EVM Quick Start Guide. This guide is designed to help you through the initial setup of your EVM. Here is a snapshot of the DRA7XX EVM highlighting various components:



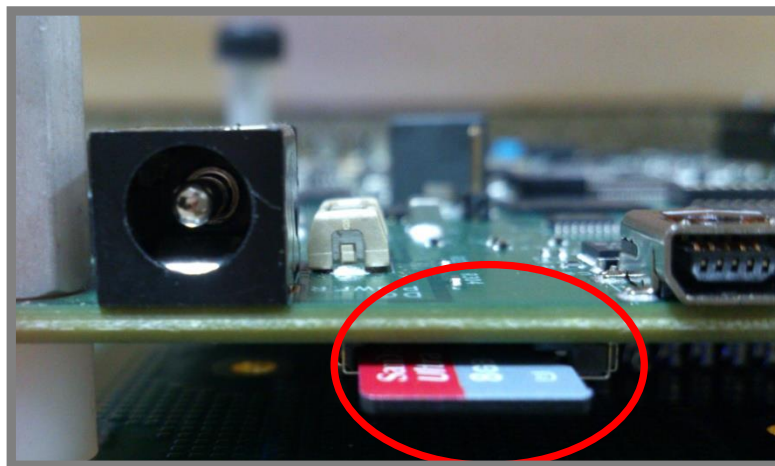
## Default setup (Linux boot from SD card)



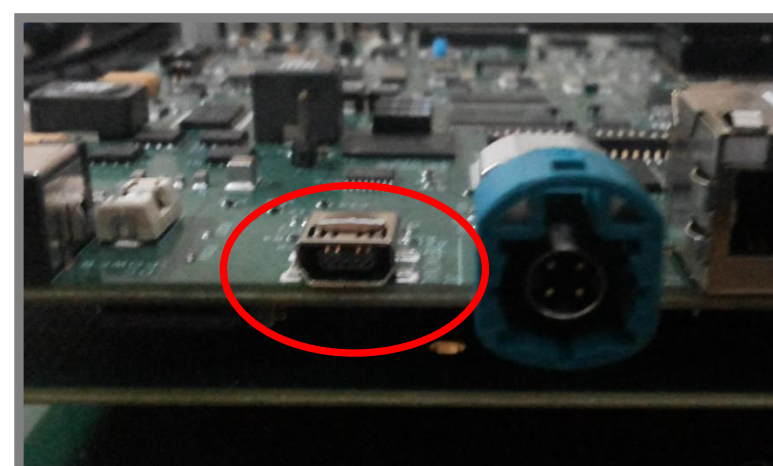
- 1** For SD boot set up, configure the switch settings as:
- ```
Sysboot [ 0 - 15] 11100000 10000001  
SW5      [ 1 - 10] 0001100000
```



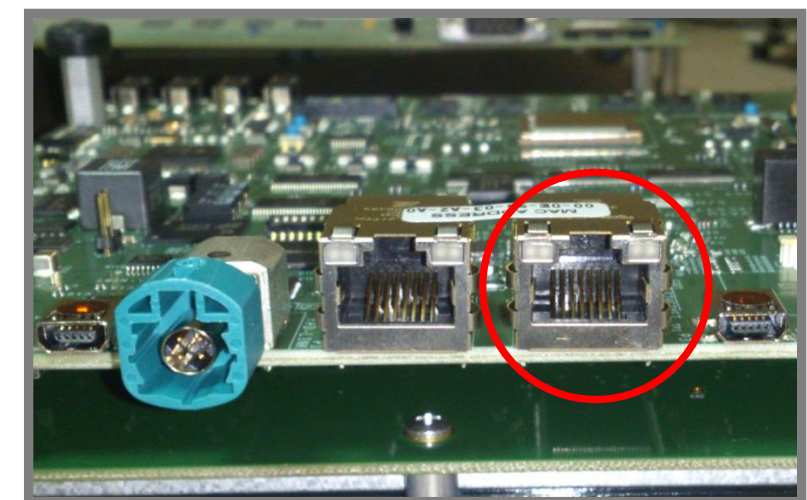
- 2** For display on HDMI, user will need to provide an external monitor and connect the cable to the board.



- 3** Create a micro SD card following the steps as explained in the Software Developers' Guide. Insert the micro SD card into the SD card slot, with micro SD card label facing up.

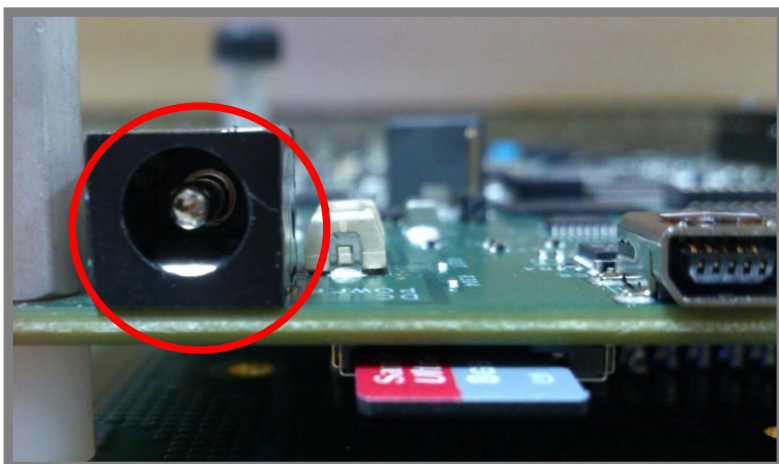


- 4** Connect a Debug USB via mini-USB connector. Connect the other end of the serial cable to a PC. This step is optional. This step enables viewing of console messages on a PC terminal and changing some of the default parameters on the board.

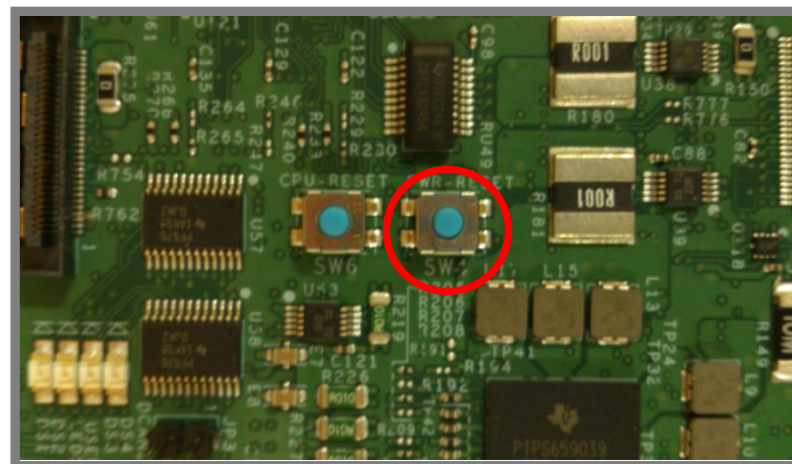


- 5** Connect the Ethernet cable to the port P5 on the board. Connect the other end of the cable to an Internet-ready connection





**6** Connect the supplied **12-V (7A)** DC power supply to the EVM (J3).



**7** Press the Power On button (SW4) to boot the board with the SD card.

**Important Notice:** The products and services of Texas Instruments Incorporated and its subsidiaries described herein are sold subject to TI's standard terms and conditions of sale. Customers are advised to current and complete information about TI products and services before placing orders. TI applications assistance, customer's applications or product designs, software patents. The publication of information regarding any other company's TI's approval, warranty or endorsement thereof. obtain the most assumes no liability for performance, or infringement of products or services does not constitute TI's approval, warranty or endorsement thereof.

**Trademarks in this issue:** The platform bar is a trademark of Texas Instruments. All other trademarks are the property of their respective owners.

© 2013 Texas Instruments Incorporated.

For support questions please contact : [support.ti.com](http://support.ti.com) or [www.ti.com/e2e](http://www.ti.com/e2e).



## DRA7XX EVM Quick Start Guide